

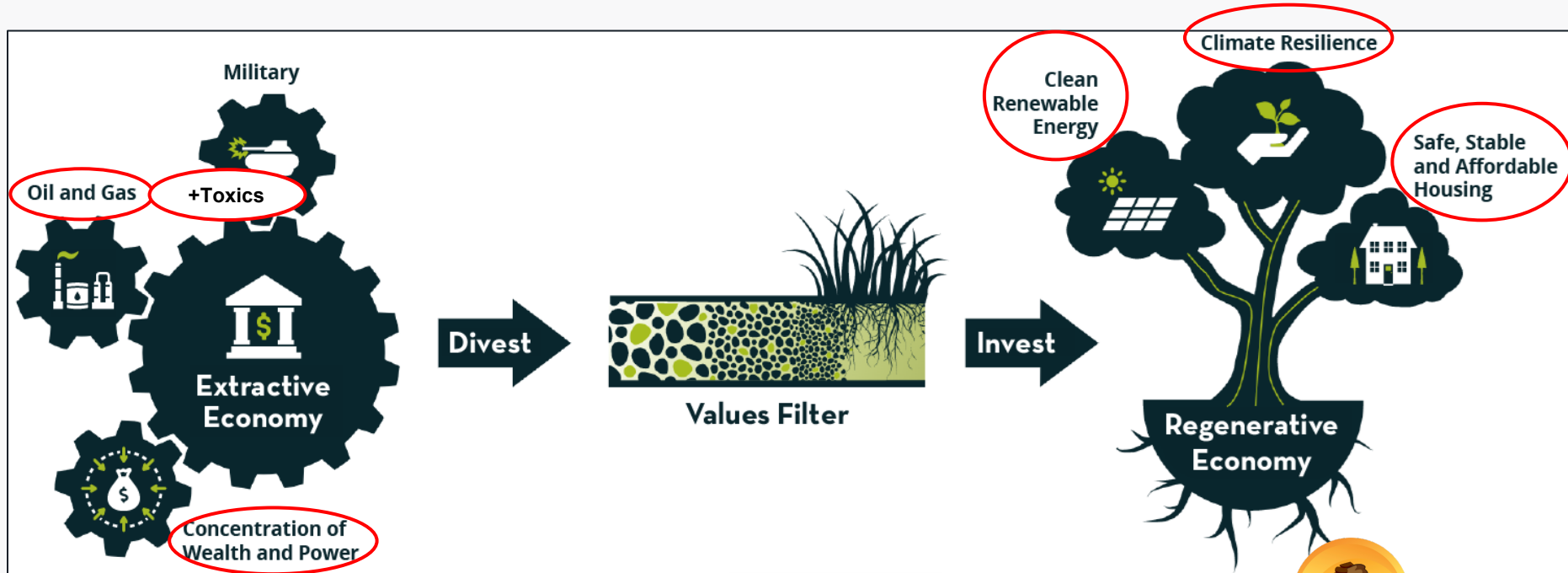
Electric Program Investment Charge Program (EPIC)

Considerations for Equitable & Just Investments

Alexis Sutterman (she/they)
Energy Equity Manager
California Environmental Justice Alliance



CEJA's Vision for A Just Transition



How EPIC Can Support a Just Transition

“The California Energy Commission’s Electric Program Investment Charge (EPIC) program invests in scientific and technological research to accelerate the transformation of the **electricity sector** to meet the **state’s energy and climate goals**.”

“The California Energy Commission is committed to strengthening opportunities for **all Californians to participate in, and benefit from, the clean energy revolution**.”



How EPIC Can Support a Just Transition

1. Address disappointing track record of EPIC funds going to **harmful, combustion-based projects in EJ communities**, and very little of it going to projects that **actually benefit** EJ communities.
2. Create an **appropriate filter for bad projects**, and a more **transparent, community-driven process** for selecting projects that receive EPIC funding.
 - Address the lack of **EJ stakeholders** in the process thus far, and correct course by meaningfully bringing in more EJ stakeholders early on and throughout the process.

How EPIC Can Support a Just Transition

3. Invest in more solutions to **improve access of green economy in low-income and disadvantaged communities**, noting that the barriers faced in these communities are different and greater than those faced in other communities.

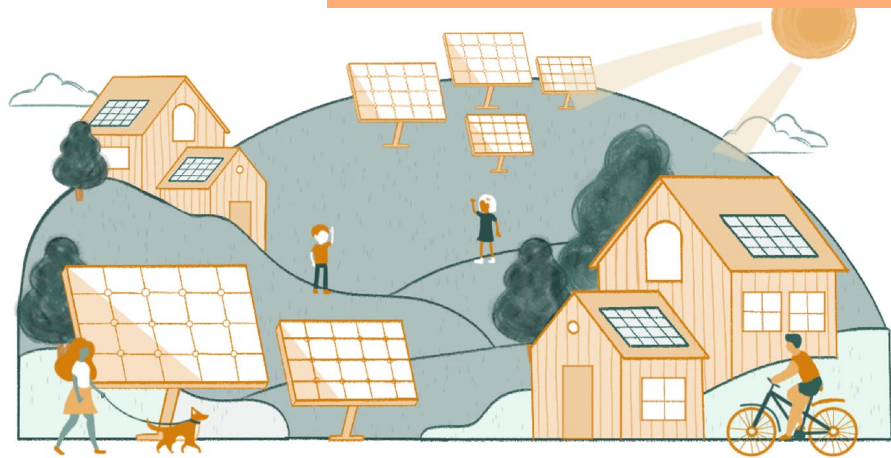
Healthy Homes



Community Resilience Hubs



Community Renewables



Utility Justice



Energy Justice Principles

- **Address immediate, material needs.** Ensure affordability while keeping power on + people housed.
- **Target investments and benefits in EJ communities.** Prioritize investments for the communities with the least resources and who are most vulnerable to negative impacts and have borne the burden of extraction.
- **No 'one-size fits all' model.** Design programs that allow for variation based on local community needs and neighborhood contexts
- **Protect and mitigate against false solutions and harms, especially to EJ communities.**
- **High-road jobs and workforce development**
- **Community resilience to climate change.** Prioritize protecting communities from intensifying climate disasters such as extreme heat, power outages, and wildfires.
- **Community ownership and governance.** Energy is public good, and should be democratized at all levels and not market driven. Invest in community-owned, controlled, local, and distributed energy systems and technologies.
- **Community leadership and expertise.** The communities we organize with and advocate alongside speak on their own behalf.



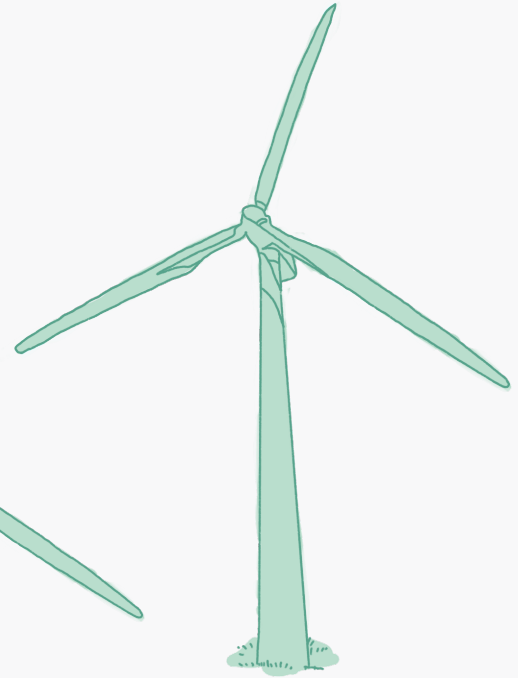
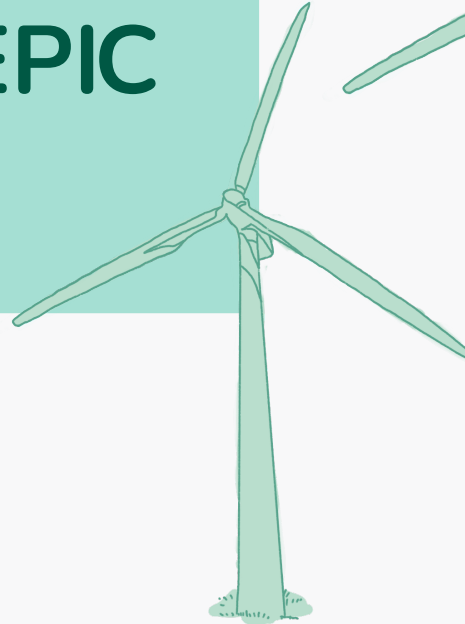
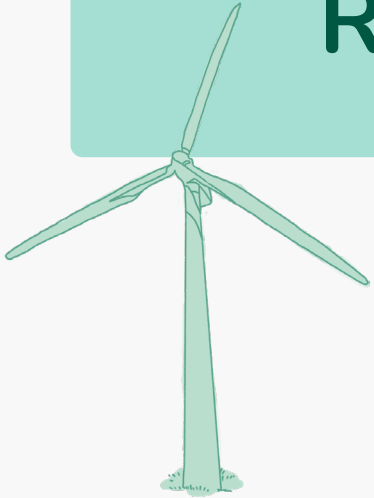
Energy Justice Principles

- **Address immediate, material needs.** Ensure affordability while keeping power on + people housed.
- **Target investments and benefits in EJ communities.** Prioritize investments for the communities with the least resources and who are most vulnerable to negative impacts and have borne the burden of extraction.
- **No 'one-size fits all' model.** Design programs that allow for variation based on local community needs and neighborhood contexts
- **Protect and mitigate against false solutions and harms, especially to EJ communities.**
- **High-road jobs and workforce development**
- **Community resilience to climate change.** Prioritize protecting communities from intensifying climate disasters such as extreme heat, power outages, and wildfires.
- **Community ownership and governance.** Energy is public good, and should be democratized at all levels and not market driven. Invest in community-owned, controlled, local, and distributed energy systems and technologies.
- **Community leadership and expertise.** The communities we organize with and advocate alongside speak on their own behalf.



CEJA Priorities for EPIC RD&D Funding

“Building the new”



Air Pollution

1. How can we **strategically site clean energy projects** in low-income and disadvantaged (EJ) communities to **retire fossil fuel infrastructure**, and **reduce local air pollution** and greenhouse gas emissions?

1. How can we increase **clean back up generation** to reduce reliance on dirty diesel backup generators?

Grid Reliability

1. How can long duration storage, **demand flexibility**, **energy efficiency**, and **clean and distributed energy resources** be utilized to phase out combustion? How can we shift reliability metrics and planning to better reflect what causes outages at a distribution level?
2. What innovations will help EJ households be able to participate in **demand-side programs** when faced with limitations on available technologies, internet access, and limited ability to shift load given work schedules?
3. How can California better consider the reliability benefits of **clean distributed energy resources (DERs)** to facilitate phasing out combustion resources?



Energy Resilience

1. How can we develop more **community resiliency centers** in communities in an economically efficient way to ensure access for all EJ communities?

1. If paired with islanding technology, how can **community solar + storage** projects bring both system-wide reliability and local resilience benefits to nearby communities? Where should these projects be sited to reach the most vulnerable EJ communities experiencing disproportionate impacts of climate disasters?

Meaningful Access & Benefits

1. As state-wide electrification increases, what are ways to secure more of the **benefits** from the clean energy transition **to EJ communities** either through new program or tariff designs?
1. What are strategies to guarantee **bill affordability** and protections for those experiencing the highest energy burden?
 - Mapping and synthesis of current bill protections and affordability offerings, layered with potential new opportunities with pursuing proposed projects through EPIC

Holistic & Community-Centered Approaches

1. What are ways to deliver **integrated energy resources and technologies** to reduce harms and maximize benefits for EJ communities?

1. How can we integrate programs to increase **accessibility** for community-level resources?

Concluding Remarks

CEJA recommends prioritizing investments and research into “*building the new*” of the clean energy economy. Specifically, we support investments in clean, distributed energy resources and projects that can bring the maximum amount of economic, health, and resilience benefits to EJ communities.



Thank you!

Contact:

Alexis Sutterman - alexis@caleja.org

Energy Equity Program Manager,
California Environmental Justice Alliance

